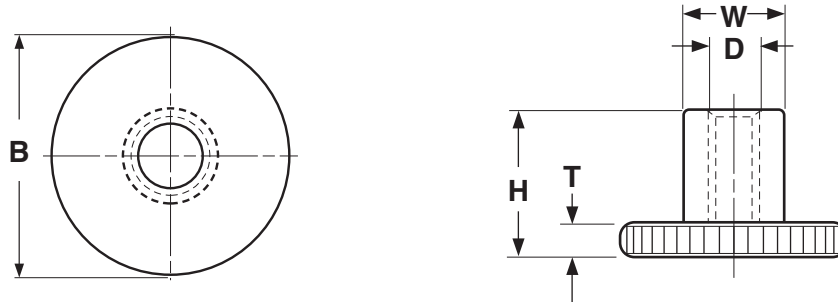


DIN 466 Knurled Nuts, High Type

NUTS



DIN 466 KNURLED NUTS, HIGH TYPE

| Nominal Diameter | B | H | T | W |
|------------------|-----------------------------|--------------|---------------------------|---------------------------|
| | Diameter of Knurled Section | Total Height | Knurled Section Thickness | Cylinder Outside Diameter |
| | Ref | Ref | Ref | Ref |
| M3 | 12 | 7.5 | 2.5 | 6 |
| M4 | 16 | 9.5 | 3.5 | 8 |
| M5 | 20 | 11.5 | 4 | 10 |
| M6 | 24 | 15 | 5 | 12 |
| M8 | 30 | 18 | 6 | 16 |
| M10 | 36 | 23 | 8 | 20 |

| | |
|-------------------------------------|--|
| Description | Internally threaded barrel-shaped fasteners integrally formed with a pancake-shaped top, which has a knurled edge to facilitate manual tightening and loosening. |
| Applications/ Advantages | Designed to be easily tightened and loosened by hand. |
| Material | A2 & A4 Stainless Steel |
| Plating | Stainless knurled nuts are typically supplied without any additional finish. |